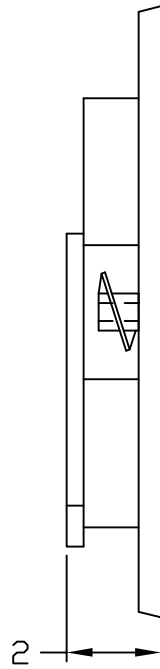
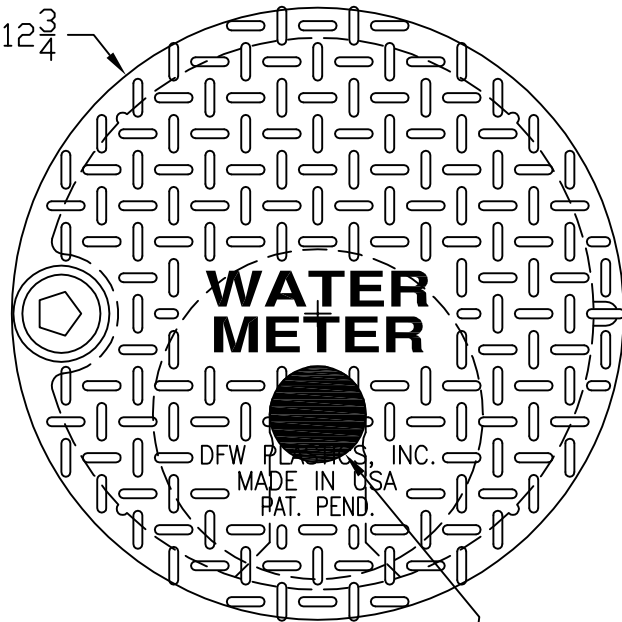


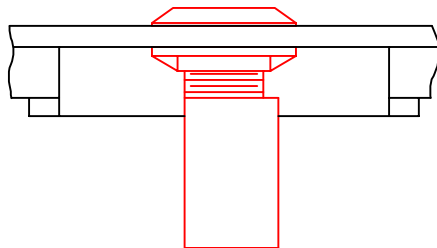
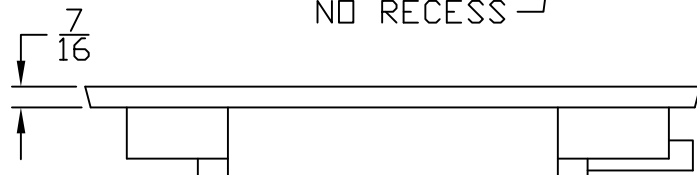
ORION TRANSPONDER



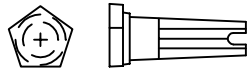
Ø12³/₄



2" DRILL HOLE
NO RECESS

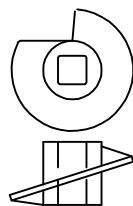


VIEW w/ ERT INSTALLED

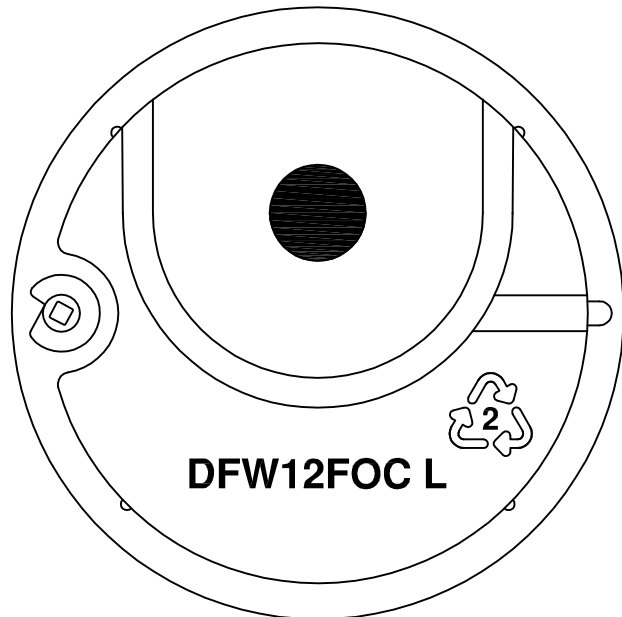


DFW PIN - STANDARD HEAD

ROUND TAPERED PIN
W/ (4) FLAT SIDES
EA FLAT HAS A CTR SPINE



WORM GEAR



DFW12FOC L

NOTES

1) DIM'S ± 1/8 U.N.O.



DFW PLASTICS, INC.
1001 JARVIS RD
FORT WORTH, TX. 76179
(817) 439-3600
(817) 439-3700 (f)
www.dfwplasticsinc.com

LOUDON COUNTY

DFW12FOCL-1WT-LID

FILE NAME:

*
*

UPDATED: 08/12/2010

DRAWN BY: J.C.A.

PLOT SCALE: 1:4