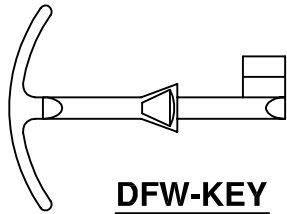
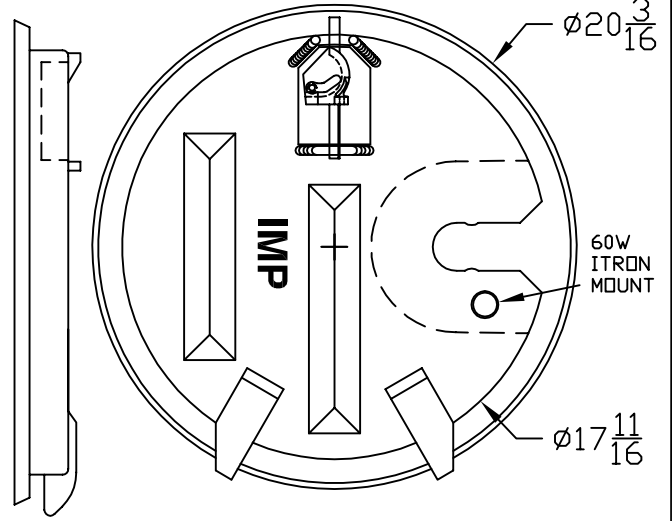
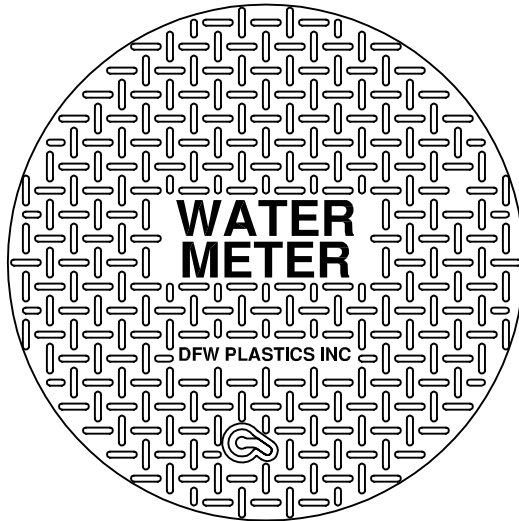
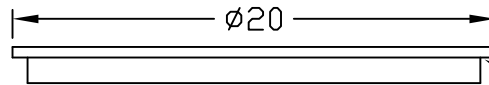


**DFW-SBOLT  
INSTALLED**

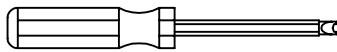


**DFW-KEY**

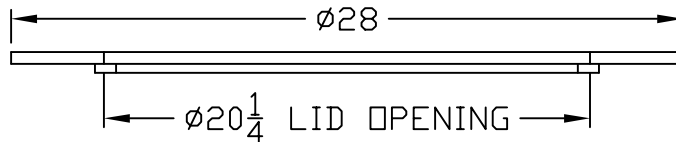
**DFW20AMRI-1SA-LID**



PLASTIC LID  
DFW20AMRI-1SA-LID



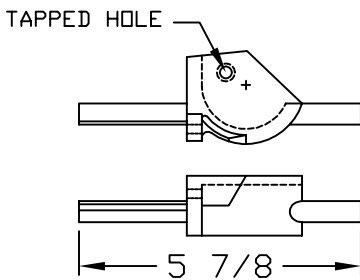
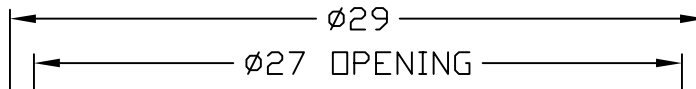
**DFW-SDRIVER**



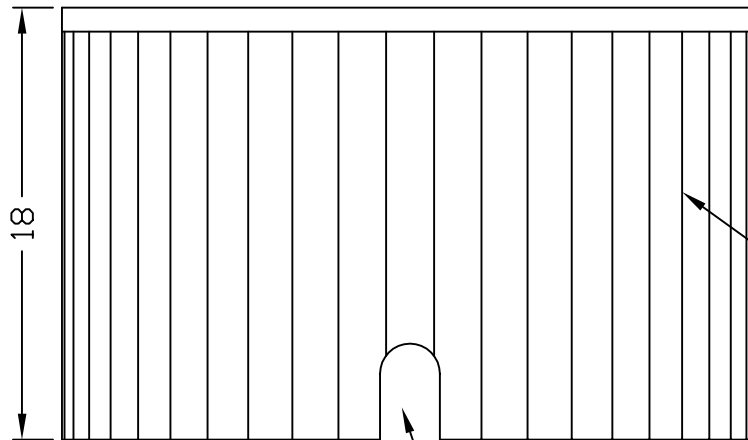
CAST IRON RING  
DFW-28G



**DFW-SBOLT**



**DFW-SBLOCK-XL**



CRUSH RESISTANT  
RIBBING  
DFW-2818F

PIPE SLOT  
**DFW-2818F-1ISA**

**NOTES:**

- 1) DIM'S  $\pm \frac{1}{8}$  U.N.O.
- 2) SNAP LOCK POCKET WILL RECIEVE ITRON ERT. SNAP LOCK SLOT IS 1.80"  $\pm .015$  TO ALLOW FOR A FINGER FORCE INSTALL. POCKET HEIGHT IS  $\frac{1}{8}$  FOR MIN  $\frac{1}{8}$ " AIR GAP.
- 3) DESIGNED FOR IMPORT CAST IRON RING.



DFW PLASTICS, INC.  
1001 JARVIS RD  
FORT WORTH, TX. 76179  
(817) 439-3600  
(817) 439-3700 (f)  
www.dfwplasticsinc.com

DFW-2818F-1ISA

FILE NAME:  
\* DFW2818F-1ISA.DWG

UPDATED: 03/11/2010

DRAWN BY: J.C.A.

PLOT SCALE: 1:8