

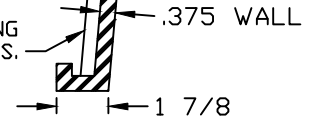
**DFW39F-1-LID**



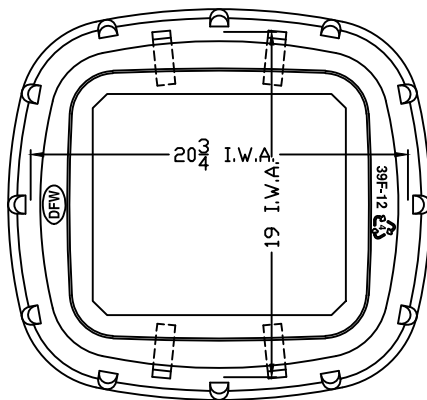
LID KEY	
1	BLACK COLOR

WALL TO LID LIP  
KISS OFF FOR  
EXTRA STRENGTH  
TYP (4) PLCS

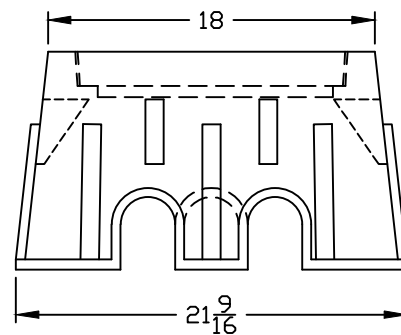
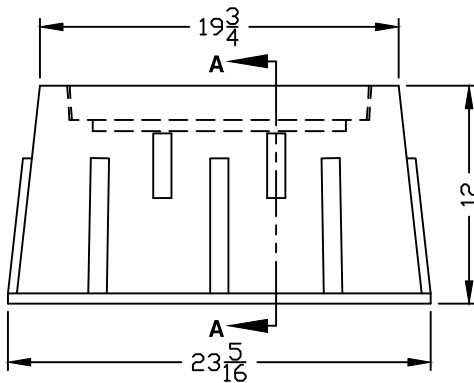
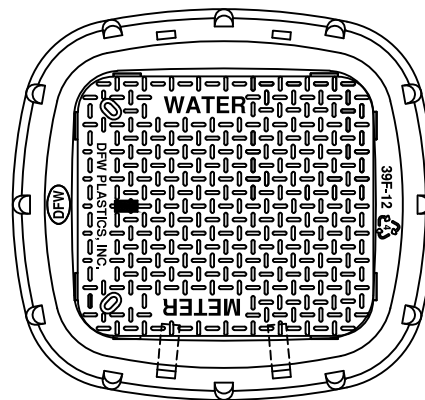
VERT. RIBBING  
TYP (12) PLCS.



**SECTION A-A**



**DFW39F-12-1**



**NOTES**

- 1) DIM'S  $\pm 1/8$  U.N.O.
- 2) LID MATERIAL: H.D.P.E.
- 3) BODY MATERIAL: L.L.P.E.
- 4) WALL THICKNESS:  $3/8 \pm 5\%$
- 5) I.W.A. = INSIDE WORK AREA

**DFW39F-12-BODY**

DFW PLASTICS, INC. ENGAGES IN ONGOING RESEARCH AND DEVELOPMENT TO IMPROVE AND ENHANCE ITS PRODUCTS. THEREFORE, DFW PLASTICS, INC. RESERVES THE RIGHT TO CHANGE PRODUCT OR SYSTEM SPECIFICATIONS WITHOUT NOTICE.



DFW PLASTICS, INC.  
PO BOX 648  
BEDFORD, TEXAS 76095  
(817) 439-3600  
(817) 439-3700 (f)  
www.dfwplasticsinc.com

DFW39F-12-1

CREATED: 03/28/2014

UPDATED: 03/28/2014

ACCEPTED: JMc

DRAWN BY: RMc

PLOT SCALE: 1:10