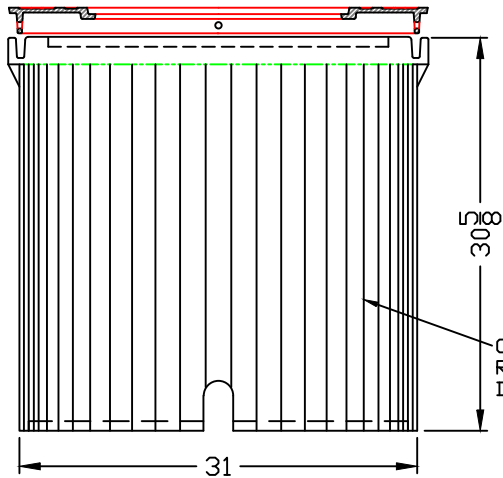
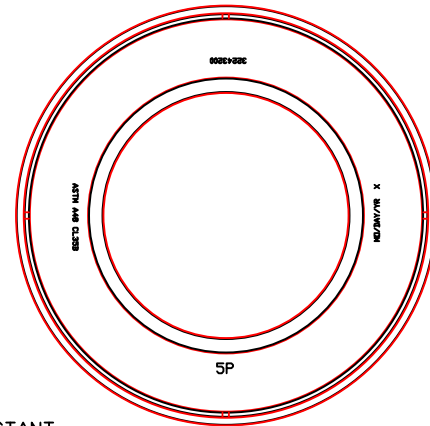


RING SECTION



CRUSH RESISTANT
RIBBING
DFW2830FD



DFW-28G

NOTES

- 1) DIM'S $\pm 1/8$ " U.N.O.
- 2) BODY MATERIAL: LLDPE
- 3) WALL THICKNESS: $3/8$ " MINIMUM

DFW PLASTICS, INC. ENGAGES IN ONGOING RESEARCH AND DEVELOPMENT TO IMPROVE AND ENHANCE ITS PRODUCTS. THEREFORE, DFW PLASTICS, INC. RESERVES THE RIGHT TO CHANGE PRODUCT OR SYSTEM SPECIFICATIONS WITHOUT NOTICE.



DFW PLASTICS, INC.
PO BOX 648
BEDFORD, TEXAS 76095
(817) 439-3600
(817) 439-3700 (f)
www.dfwplasticsinc.com

DFW2830FD

CREATED: 05/24/2016

UPDATED: 05/24/2016

ACCEPTED: JMc

DRAWN BY: RMc

PLOT SCALE: 1:10